



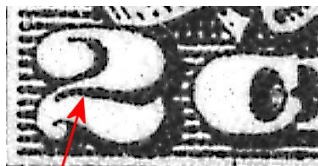
Identifying 1918-1920 2¢ Offset Washington Issues

To quickly sort through the 2¢ offset Washington issues, use this guide to systematically sort and organize your stock. There are only 5 types to distinguish.

1. Check Left Numeral "2"



Broken "2"
Type IV, V or Va



Heavy Line
Type VI
528A or 534A (imperf)



Line Thinner than Type VI
Type VII
528B

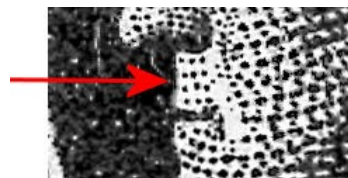
2. Dots on Nose



If 6 dots on nose,
then Type IV or V

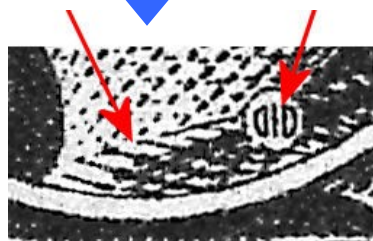


If 4 dots on nose,
then Type Va
#528, 534 (imperf)

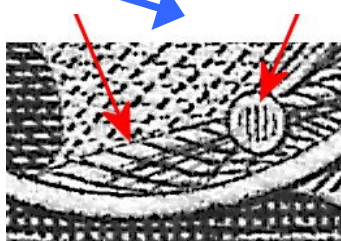


For Type VII, further proof
upper lip has
4 rows of 3 dots

3. Toga Rope & Button



Broken rope and "DID" in
toga button
Type IV
#526, 532 (imperf)



Clearly defined lines,
button has vertical lines
Type V
#527, 533 (imperf)